



**Zizinia**  
MOSTAKBAL



# DELIVERING SUCCESS

## Zizinia

We create residential spaces and business complexes that would always match up with the needs of the Egyptian market. We strive to fulfill the needs of our clients by offering them a product that would level up to their expectations.

**ARDIC** had **4** delivered gated communities in New Cairo and El sherouk city.

**Location:** 5<sup>th</sup> Settlement, New Cairo  
**Project size:** 59.20 Feddans

### Types

- **83** Apartment Buildings
- **39** Villas
- **11** Administrative Buildings
- **25** Townhouses

### Facilities & Amenities

- Bank (Faisal Islamic Bank)
- Nursery
- Mosque
- **2** Gates

Project Delivered in **2005**

# Zizinia

GARDEN

Location: 5th Settlement, New Cairo  
Project size: 27.20 Feddans

## Types

- 24 Twin houses
- 76 Villas
- 1 Administrative Office

## Facilities & Amenities

- Leveled Green Landscaping
- Lagoon
- 2 Gates
- 24/7 Security

Project Delivered in 2009

# Zizinia

ROSE

Location: 5<sup>th</sup> Settlement, New Cairo  
Project size: 17.89 Feddans

## Types

- 57 Villas
- 1 Administrative Office

## Facilities & Amenities

- Leveled Green Landscaping
- Lagoon
- 2 Gates
- 24/7 Security

Project Delivered in 2011

# Zizinia

FLOWERS

Location: El sherouk city  
Project size: 15.35 Feddans

## Types

- 50 Twin houses
- 19 Villas

## Facilities & Amenities

- Green Landscaping
- Nursery
- Clubhouse
- 2 Gates
- 24/7 Security

Project Delivered in 2014

## OUR STORY

Who we are

ARDIC is a leading real estate developer with more than 20 years of experience in the Egyptian market. Our deeply rooted market insights and expertise were poured to aid in the development of our real estate product that saw the light; **Zizinia**. Through this product, we have managed to crystalize our understanding of the market needs and the preferences of the clients in one destination for luxury that is traced across all the projects of the company.

ARDIC managed to contribute to the progress of the real estate development sector in Egypt by continuously offering innovative top-notch products that are based on creative designs which distinguished ARDIC from the competition with the contemporaneity of its concepts in all projects.

**YOUR NEXT MOVE  
IS NOW A REALITY**

**Zizinia**  
MOSTAKBAL

**YOUR NEXT MOVE  
Is in Mostakbal City**

Compound Area : 70 Feddans  
Percentage of Buildings : 20 %  
Percentage of Greenery, Lakes&facilities : 80 %  
Buildings Heights : Ground + 5

**Buildings type :**

- EL Talid
- EL Dima
- EL Layan
- EL Saja

**Unit Types :**

- 2 Bedroom Apartment
- 3 Bedroom Apartment
- Penthouses
- Duplexes





# LOCATION

A BLEND OF PERFECTION AND SOOTHING ENVIRONMENT

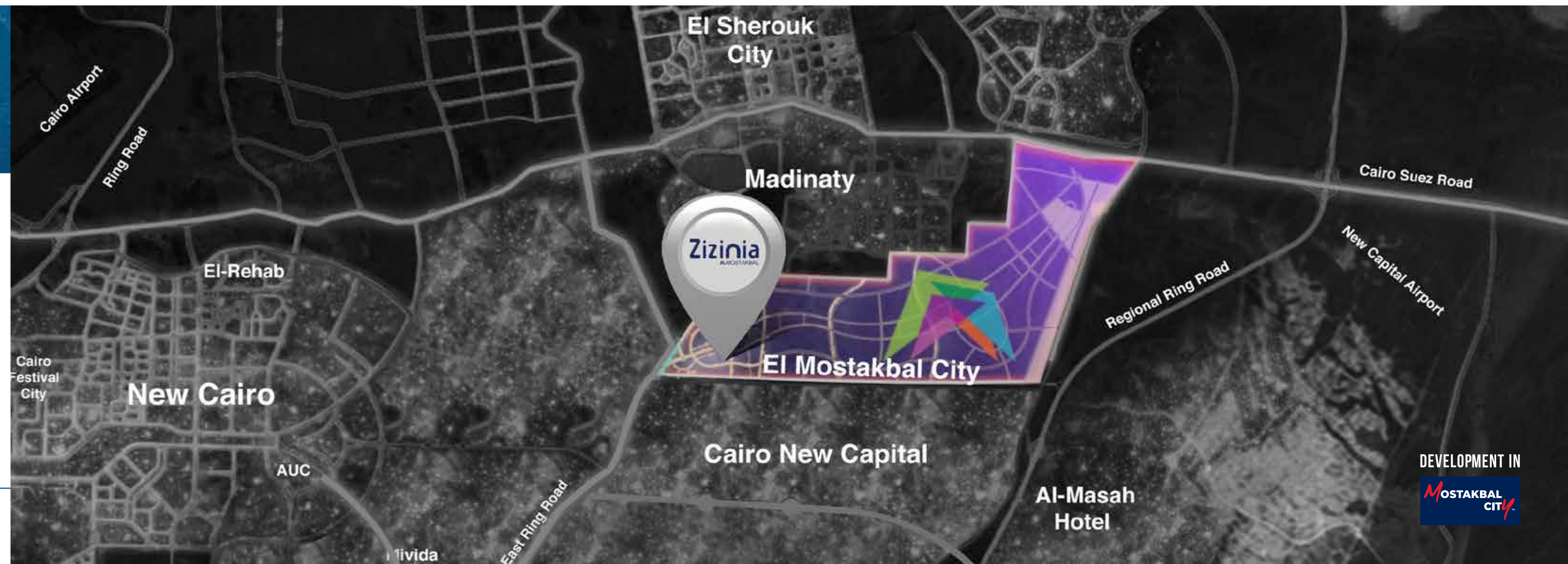
Zizinia El Mostakbal is located in Mostakbal City – New Cairo on the main axis of El Teseen (90) Road extension.

**12** km from the AUC.

**5** Minutes from the Suez Cairo road.

**5** Minutes from 90 road & **45** Minutes from EL Ain Sokhna.

Zizinia El Mostakbal - Mostakbal City





# BREATHTAKING LIFE EXPERIENCE

**80%**  
GREENERY

Zizinia El Mostkbal is predominately designed with a myriad of waterways that are surrounded by lush greenery. You can enjoy the calming and rejuvenating effect of a daily walk that starts just outside your door.

Zizinia El Mostakbal - Mostakbal City



DEVELOPMENT IN  
**MOSTAKBAL CITY**



# COMPOUND AMENITIES

ENJOY A RELAXING LIFESTYLE WITH SERVICES AT YOUR DOOR

In Zizinia El Mostakbal you can find a variety of elegant residential experiences. Wherever you look we have found a way to make your life easier, whether it is designed lagoons spread out in the entire compound, green areas, security, garbage chute system, services in the commercial area or business curve. Every detail is designed for your comfort.

- CLUBHOUSE
- MEDICAL CENTER
- WATERWAYS
- BARBECUE STANDS

- COMMERCIAL AREAS
- MOSQUE
- SOLAR PANELS

Zizinia El Mostakbal - Mostakbal City



DEVELOPMENT IN  
**MOSTAKBAL CITY**



# FLOOR PLANS

Zizinia El Mostakbal - Mostakbal City





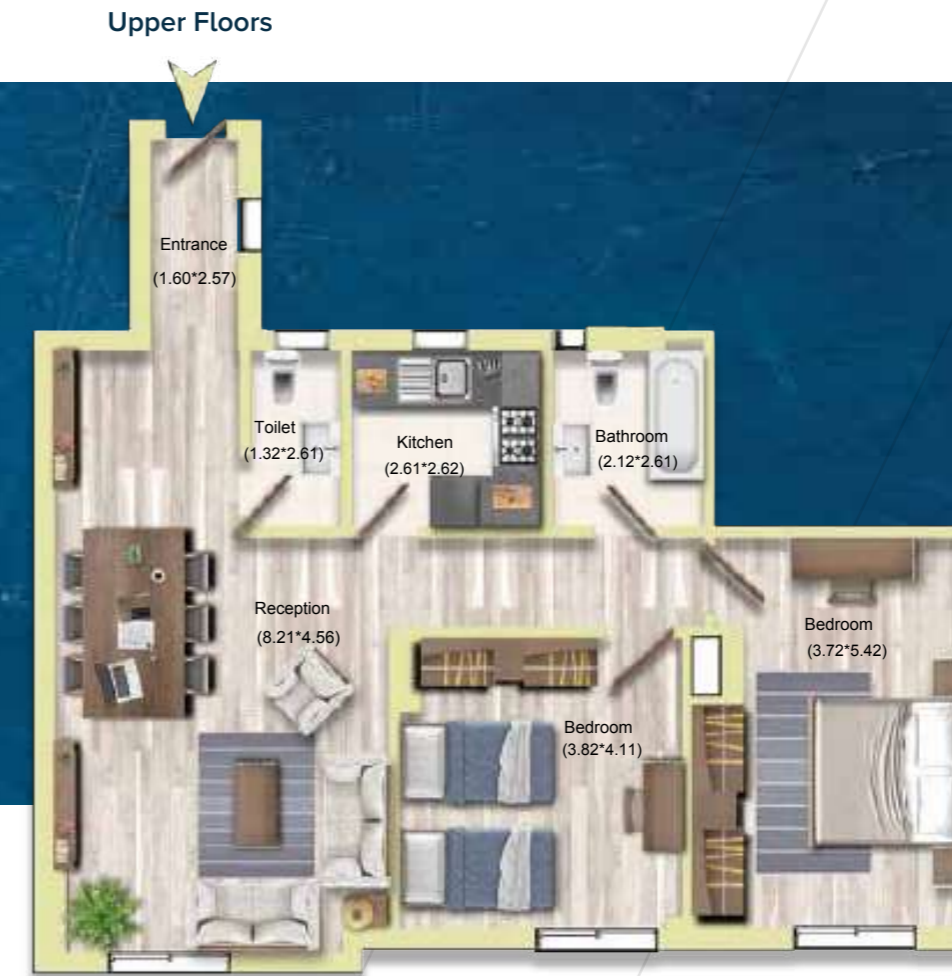
# APARTMENT 85M<sup>2</sup>



**A1**  
DIMA



# APARTMENT 120M<sup>2</sup>



**B3**  
LAYAN



# APARTMENT 125<sup>M<sup>2</sup></sup>



Upper Floors

**A3**  
SAJA



# APARTMENT 130M<sup>2</sup>



Upper Floors



A2  
DIMA



# APARTMENT 135<sup>M<sup>2</sup></sup>



A6  
DIMA



# APARTMENT 135<sup>M<sup>2</sup></sup>



**A2**  
TALID

← Upper Floors



# APARTMENT 135<sup>M<sup>2</sup></sup>



**B2**  
DIMA



# APARTMENT 140M<sup>2</sup>





# APARTMENT 145<sup>M<sup>2</sup></sup>



**A1**  
TALID



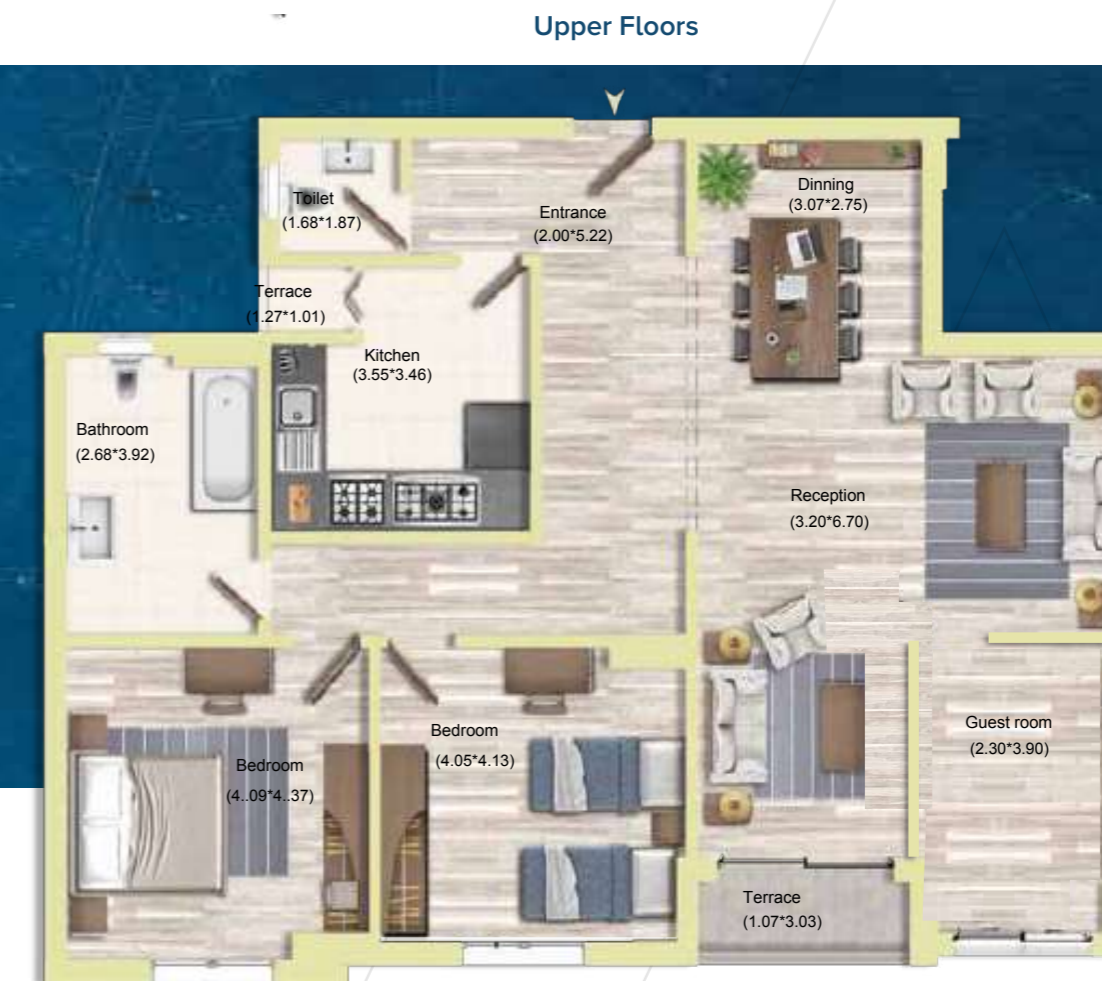
# APARTMENT 155M<sup>2</sup>



A5  
DIMA



# APARTMENT 165M<sup>2</sup>



03  
DIMA



# APARTMENT 165<sup>M<sup>2</sup></sup>



03  
TALID



# APARTMENT 210M<sup>2</sup>



Upper Floors ➔



A3  
LAYAN

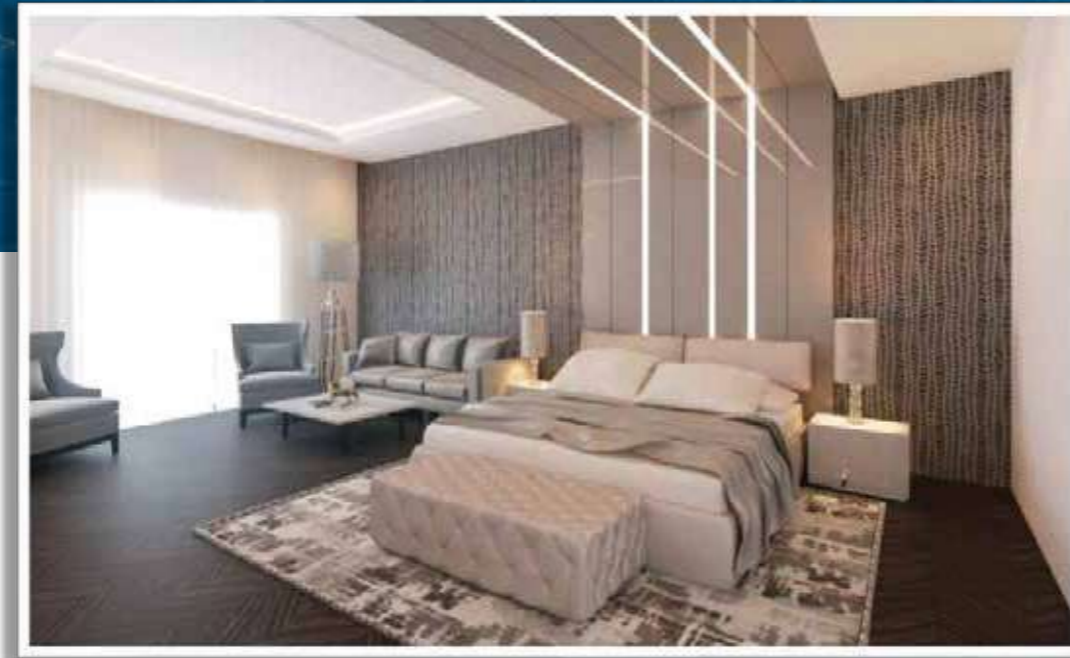


# APARTMENT 210M<sup>2</sup>



01  
TALID

# APARTMENT 220M<sup>2</sup>





# APARTMENT 220M<sup>2</sup>



05  
LAYAN

# APARTMENT 230M<sup>2</sup>



04  
LAYAN



# APARTMENT 245<sup>M<sup>2</sup></sup>



07  
DIMA

Upper Floors



# APARTMENT 255M<sup>2</sup>





# APARTMENT 255M<sup>2</sup>



# APARTMENT 260M<sup>2</sup>



04  
SAJA





# APARTMENT 260M<sup>2</sup>



# APARTMENT 265M<sup>2</sup>



Upper Ground



Lower Ground



06  
LAYAN  
DUPLEX



# APARTMENT 265M<sup>2</sup>



Upper Ground



Lower Ground

## B5 DIMA DUPLEX

# APARTMENT 265M<sup>2</sup>





# APARTMENT 265M<sup>2</sup>



# APARTMENT 275<sup>M<sup>2</sup></sup>



03  
SAJA





# APARTMENT 275<sup>M<sup>2</sup></sup>



**05**  
DIMA  
VERANDA



# APARTMENT 290M<sup>2</sup>



02  
LAYAN

Upper Floors



# APARTMENT 300M<sup>2</sup>



Upper Floors

04  
LAYAN



# APARTMENT 300M<sup>2</sup>



03  
LAYAN



# APARTMENT 325M<sup>2</sup>





Zizinia  
MOSTAKBAL

ARDiC